

## VLC-106

### CANTILEVER LOAD CELL

#### APPLICATIONS

Tank weighing  
Hopper weighing  
Platform scales



#### STANDARD CAPACITY

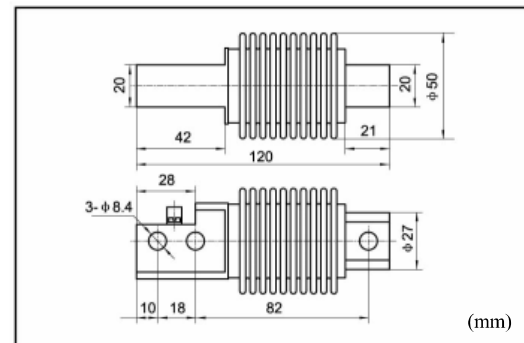
10, 20, 30, 50, 100, 200kg

#### WIRING

RED	Input (+)
BLACK	Input (-)
GREEN	Output (+)
WHITE	Output (-)

#### SPECIFICATIONS

Rated output	2mV/V $\pm$ 0.1%
Non-linearity	0.03% F.S.
Hysteresis	0.03% F.S.
Non-repeatability	0.02% F.S.
Creep (in 1 hr)	0.03% F.S.
Zero Balance	$\pm$ 1%
Temp. effect span	15 PPM / °C
Temp. effect zero	26 PPM / °C
Operating Temp. range	-20°C ~ +60°C
Compensated Temp. range	-10°C ~ +40°C
Input resistance	385 $\pm$ 15 $\Omega$
Output resistance	350 $\pm$ 3 $\Omega$
Safe overload	150% F.S.
Ultimate overload	300% F.S.
Excitation voltage	10VDC/AC
Max. Excitation voltage	15VDC/AC
Insulation resistance	$\geq$ 2000M $\Omega$
Environmental protection	IP68
Material	Alloy tool steel
Cable Length	20FT



\* Specifications are subject to change without prior notice