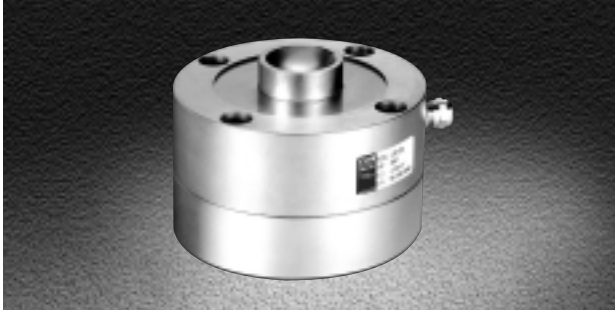


# LSB Pan cake load cell, 20tf

Load Cell



### FEATURES

- High output (4mV/V)
- Low profile design
- Integrated ball loading construction

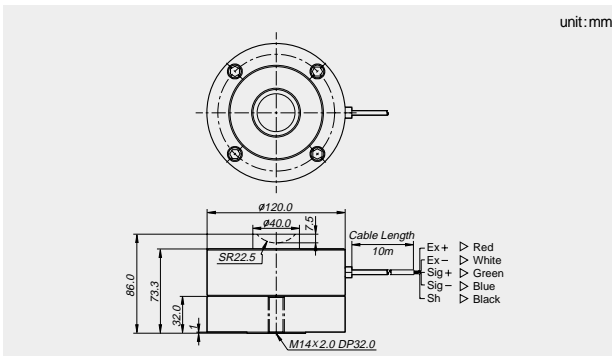
### OPTIONS

- Without accessory

### SPECIFICATIONS

Max. capacity	tf	20
Rated output	mV/V	4.0 ± 0.01
Zero balance	mV/V	0 ± 0.04
Combined error	%	0.03
Repeatability	%	0.02
Creep for 30min.	%	0.03
Temperature effect on		
Zero Value	%/10°C	0.03
Output value	%/10°C	0.03
Excitation		
Recommended	V	10
Maximum	V	15
Resistance		
Input	$\Omega$	420 ± 30
Output	$\Omega$	350 ± 3.5
Insulation	M $\Omega$	> 2,000
Compensated temperature range	°C	-10 to +40
Operating temperature range	°C	-50 to +80

### DIMENSIONS



### Material

Nickel plated steel

### Cable

Braided shield 4-wire round cable with Urethane-jacket

